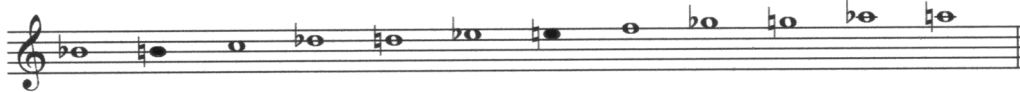


## Daegum Scale

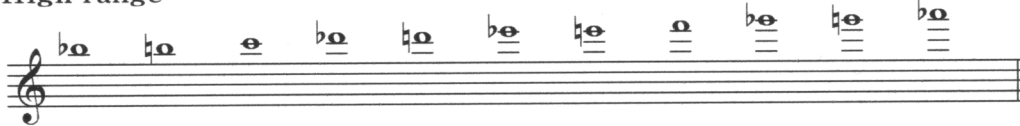
Low range



Middle range



High range



Caution is required when using ●(black) notes as these notes need slight pitch adjustment by the player—either by opening a tone hole halfway down the instrument or by covering the embouchure hole with lips. Especially, an arrangement of half tones with ●(black) notes in consecutive order can be difficult to play, depending on its figures. The pitch of ●(black) notes in the middle and low ranges can have tendency to be unstable and produce very limited dynamic.